

NOTICE TO MARINERS

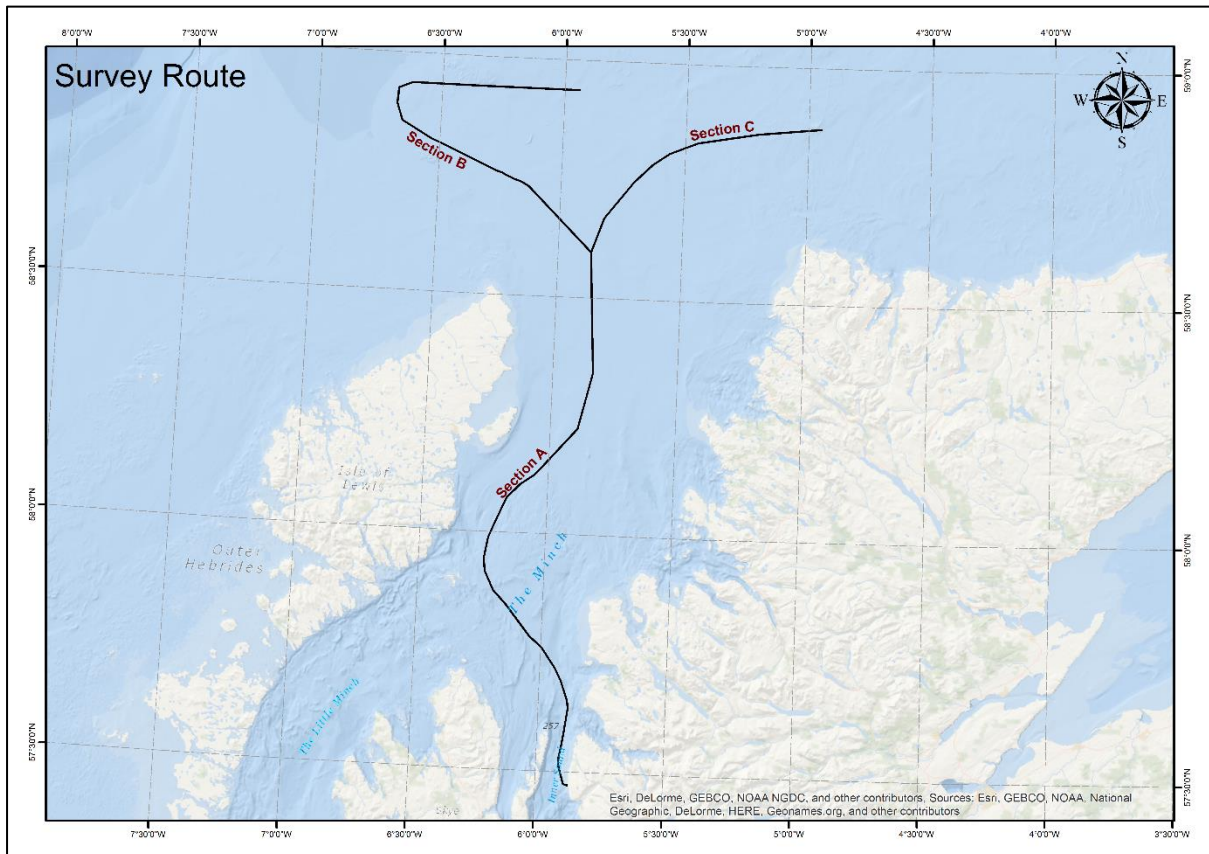
Route Survey

Date of Issue: 26th July 2016 (Rev. 0)

Mariners are advised that EGS International Ltd (EGSi) will be undertaking, on behalf of QinetiQ Ltd, bathymetric, geophysical and geotechnical survey operations along the lines highlighted below, stretching from Applecross, Inner Sound, North West Scotland out towards the continental shelf through the Minch.

Marine operations will be running from around the **8th August 2016** with expected completion by **mid-October 2016**.

The survey works will be carried out in a corridor 500m either side of the proposed line shown in the map and detailed in the tables below.



Survey Route Overview

UTM 30N		WGS84	
Easting	Northing	Latitude	Longitude
327852.081	6373677.538	57° 28.380'N	005° 52.250'W
327682.381	6373684.717	57° 28.380'N	005° 52.420'W
327279.408	6373802.891	57° 28.434'N	005° 52.827'W

326810.270	6374021.006	57° 28.541'N	005° 53.305'W
326736.053	6374128.273	57° 28.597'N	005° 53.384'W
326121.646	6376570.850	57° 29.898'N	005° 54.102'W
325584.563	6378638.397	57° 30.998'N	005° 54.728'W
325762.862	6380383.146	57° 31.942'N	005° 54.624'W
326369.191	6383051.811	57° 33.392'N	005° 54.132'W
326894.943	6385790.073	57° 34.878'N	005° 53.722'W
327896.693	6391838.995	57° 38.157'N	005° 52.976'W
327720.278	6393577.828	57° 39.089'N	005° 53.228'W
326246.060	6398198.196	57° 41.542'N	005° 54.907'W
324837.255	6401205.018	57° 43.127'N	005° 56.455'W
321648.752	6406172.787	57° 45.726'N	005° 59.883'W
318832.365	6408718.471	57° 47.028'N	006° 02.835'W
313195.290	6416358.704	57° 51.001'N	006° 08.872'W
310367.236	6419516.832	57° 52.629'N	006° 11.877'W
308421.730	6423955.532	57° 54.967'N	006° 14.057'W
308153.145	6426948.064	57° 56.571'N	006° 14.474'W
309201.940	6432016.251	57° 59.325'N	006° 13.658'W
311277.987	6436538.131	58° 01.811'N	006° 11.771'W
313553.427	6441286.080	58° 04.424'N	006° 09.689'W
316818.729	6444440.619	58° 06.203'N	006° 06.520'W
320112.460	6446571.942	58° 07.431'N	006° 03.270'W
320815.119	6447316.487	58° 07.849'N	006° 02.589'W
330230.065	6457315.630	58° 13.453'N	005° 53.446'W
333870.438	6470401.190	58° 20.579'N	005° 50.296'W
333605.271	6484240.002	58° 28.022'N	005° 51.168'W
333412.886	6498746.458	58° 35.825'N	005° 52.002'W

Section A

UTM 30N		WGS84	
Easting	Northing	Latitude	Longitude
333412.886	6498746.458	58° 35.825'N	005° 52.002'W
318749.715	6514356.845	58° 43.872'N	006° 07.869'W
316828.342	6515484.037	58° 44.430'N	006° 09.912'W
315770.897	6515854.449	58° 44.602'N	006° 11.025'W
314148.861	6516613.761	58° 44.969'N	006° 12.741'W
313377.549	6516975.267	58° 45.144'N	006° 13.558'W
312455.636	6517534.266	58° 45.421'N	006° 14.540'W
311354.598	6517930.697	58° 45.605'N	006° 15.700'W
299941.061	6523611.144	58° 48.352'N	006° 27.821'W
295864.593	6525559.673	58° 49.286'N	006° 32.153'W
289063.657	6529851.318	58° 51.397'N	006° 39.448'W
289067.650	6529851.398	58° 51.397'N	006° 39.444'W

287907.737	6533929.996	58° 53.55600'N	006° 40.88100'W
288333.696	6537542.157	58° 55.51100'N	006° 40.64500'W
291577.826	6538727.989	58° 56.24400'N	006° 37.33800'W
309008.233	6537822.421	58° 56.24400'N	006° 19.15200'W
330969.904	6536794.257	58° 56.24400'N	005° 56.24200'W

Section B

UTM 30N		WGS84	
Easting	Northing	Latitude	Longitude
333412.886	6498746.458	58° 35.825'N	005° 52.002'W
336508.872	6506721.890	58° 40.188'N	005° 49.156'W
343475.928	6515111.123	58° 44.858'N	005° 42.307'W
347972.514	6519264.340	58° 47.190'N	005° 37.819'W
351943.382	6521841.101	58° 48.660'N	005° 33.804'W
358634.333	6524321.153	58° 50.130'N	005° 26.955'W
372800.297	6526330.295	58° 51.477'N	005° 12.311'W
387829.435	6527453.751	58° 52.333'N	004° 56.723'W

Section C

Operations will be carried out from the vessel **ILV Granuaile** (IMO 9192947; Call Sign EIPT).



ILV Granuaile

Please, be advised that during survey operations the vessel will be restricted in its ability to manoeuvre, and other vessels are requested to maintain an appropriate and safe distance of **at least 1000m**.

During operations the vessel will display the appropriate day shapes/signals and lights as required by the IRPCS. A continuous listening watch will be maintained on VHF Channel 16 and DSC.

Any enquiries regarding this notice should be direct to:

EGSi Project Manager

Walter Colautti

Email: wcolautti@egssurvey.co.uk

Office: +44 (0)1420 489329

Mobile: +44 (0)7876 707454

Any further enquiries regarding this project should be directed to:

QinetiQ Project Manager

Alex Morton

Email: amorton@qinetiq.com

Office: +44 (0)1980 663370

Mobile: +44 (0)7825 231503

Please note that the Distribution List for this Notice to Mariners is as follows:

UKHO Navigational information	hdcfiles@ukho.gov.uk
MRCC Stornoway	stornowaycoastguard@mcga.gov.uk
Kingfisher Information Services	kingfisher@seafish.co.uk
Marine Scotland	marinescotland@gov.scot
Marine Scotland (Licensing Operations Team)	ms.marinelicensing@gov.scot
Port of Stornoway Authority	sypa@stornowayport.com
Ullapool Harbour Trust	info@ullapool-harbour.co.uk
Ullapool Harbour Master	kevin@ullapool-harbour.co.uk
Northern Lighthouse Board	navigation@nlb.org.uk
Calmac Ferries	enquiries@calmac.co.uk
Scottish Fishermen's Federation	sff@sff.co.uk
Orkney Fisheries	orkneyfisheries@btconnect.com
Scottish Fisheries Office (Portree)	fo.portree@gov.scot
Scottish Fisheries Office (Ullapool)	fo.ullapool@gov.scot
Scottish Fisheries Office (Stornoway)	fo.stornoway@gov.scot
Scottish Fisheries Office (Lockinver)	fo.lochinver@gov.scot
Scottish Fisheries Office (Kinlochbervie)	fo.kinlochbervie@gov.scot
Scottish Fisheries Office (Scrabster)	fo.scrabster@gov.scot
Scottish Fisheries Office (Kirkwall)	fo.kirkwall@gov.scot
Commissioners of Irish Lights	info@irishlights.ie