


NOTICE TO MARINERS					
Organisation submitting	Albatern Ltd, Midlothian Innovation Centre, Pentlandfield, Roslin, Midlothian, EH25 9RE Contact: David Campbell, tel +44 (0)131 440 9025 mob. +44 (0) 7739 429827 email:david.campbell@albatern.co.uk				
Works undertaken on behalf of	Wavenet Energy Mingary Ltd, Midlothian Innovation Centre, Pentlandfield, Roslin, Midlothian, EH25 9RE Tel: +44 (0) 013 440 9025				
Circulation	Key stakeholders for wider circulation as they see fit				
Notice to Mariners	WEM160812-1				
Details of works	Deployment of a wave energy array and associated electrical cables				
Location	Mingary Bay north of western approaches to Loch Sunart				
WGS84 co-ordinates	Site with the following corners 56°41.61N 6°4.12'W, 56°41.60N 6°3.49'W, 56°41.36N 6°2.73'W, 56°41.21N 6°3.11'W 56°41.30N 6°4.07'W				
Description	<p>A WaveNET wave energy array of 6 individual units coupled together to form a triangular shaped array with a side of 40m length centred on position 56°41.42N 6°3.93'W, in Mingary Bay.</p> <p>The array will be marked with a yellow conical hazard navigation mark with a yellow St Andrew's Cross topmark at position 56°41.321N 6°3.936'W with a light character Fl Y 5s, nominal range of 2 miles. The array lies to the north of the navigation mark.</p> <p>A waverider buoy for wave measurement will be located with a single point mooring at position 56°41.464N 6°4.096'W. The buoy has a swing radius of 50m</p> <p>A cable for power offtake from the array at position 56°41.42N 6°3.93'W to a shore landing point at position 56°41.60N 6°3.76'W.</p> <p>A supply electric cable running from a shore landing point at position 56°41.60N 6°3.76'W around the bay to the salmon farm feed barge at position 56°41.13N 6°2.61'W.</p> <p>Please see the attached chart depicting the site layout.</p>				
Deployment start	14 August 2016				
Deployment end	31 August 2018				
<p>The first phase of the deployment will consist of the laying of the mooring grid for the array, the deployment of the waverider buoy, and the deployment of the navigation mark.</p> <p>This work will take place between 14 August and 22 August 2016, subject to weather conditions. The vessel undertaking the deployment will be keeping continuous listening watch on channel 16 and will display appropriate lights and marks as required by the International Rules for Preventing Collisions at Sea. Mariners are requested to give a wide berth.</p> <p>Further details will be supplied when the array deployment and cable laying operations are due to take place.</p>					
Name	David Campbell	Signature		Date	12 August 2016

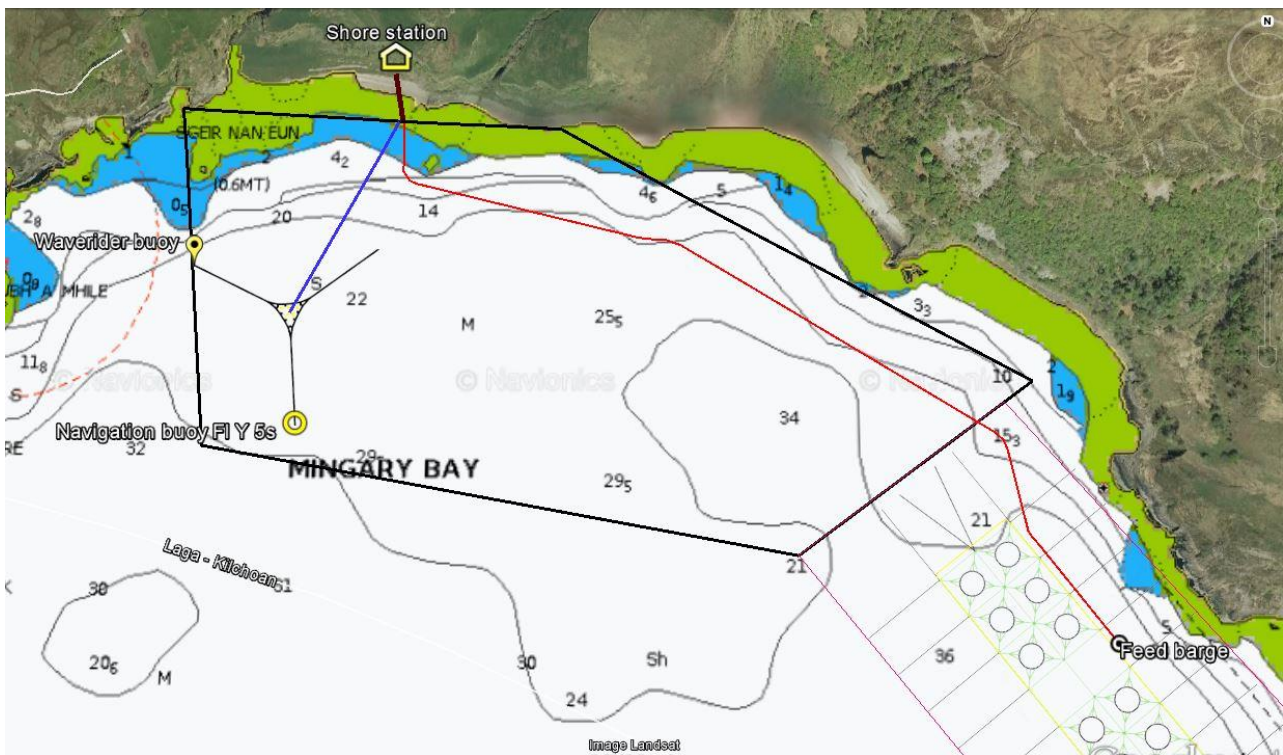


Figure 1 Mingary Bay site layout

NOT TO SCALE - Not to be used for navigation